



# Milton - Ulladulla

**ORCHID SOCIETY INC.**

Web Site: [www.miltonulladullaorchidsociety.weebly.com/](http://www.miltonulladullaorchidsociety.weebly.com/)  
<https://www.facebook.com/miltonulladullaorchidsociety/>

**JUNE 2018**

**President:**

Bruce McIntosh  
[michellemcintosh3@bigpond.com](mailto:michellemcintosh3@bigpond.com)  
44541220

**Vice President:**

Bob Harper  
44540497

**Secretary:**

Bruce McIntosh  
[michellemcintosh3@bigpond.com](mailto:michellemcintosh3@bigpond.com)  
44541220

**Treasurer:**

Rod Thomas  
[rofae@tomos.biz](mailto:rofae@tomos.biz)  
4456 4352

**Committee:**

Michelle McIntosh  
Bob Harper  
Gary McConnell  
Sam Burton  
Ron Cox  
Wayne Hamilton  
Jo Church

**Editor:**

Anne-Marie Collins  
[arimane@yahoo.co.uk](mailto:arimane@yahoo.co.uk)  
POSTAL ADDRESS  
P.O.Box 603 Ulladulla  
NSW 2539

\*\*\*\*\*REMINDER\*\*\*\*\*

Those wishing to go on the St Ives bus trip [ 17th August ], need to book with Rod Thomas A.S.A.P. Limited number of seats left. Cost is \$29 which is for bus fare and entry fee.

\*\*\*\*\*

**RAFFLE WINNERS from June Meeting— Well done to all who went home with a new plant or item, can't say individual winners as the orchid fairy pinched the data.**

A big thank you to those who bring in items for the monthly meeting raffle or our 2 auctions each year—greatly appreciated. :)

\*\*\*\*\*

**PERPETUAL TROPHIES**

If you still have a perpetual trophy from last year's Spring or Winter shows—please bring them to the July meeting. Thanks. :)

\*\*\*\*\*

**MISPLACED**

**A bag of stanhopea bulbs was left at the hall last meeting—if found please hand in to the Secretary. Thank you.**

\*\*\*\*\*

**FROM THE EDITOR.**

We have a few new sections in our newsletter. Any more suggestions or ideas, are always welcome.

"Did you know ?" section, on the last page, has a couple of follow-ups to last month's newsletter. A.M.



**NEXT MEETING: 9 th July 2018**

Our speaker at the July meeting is **Liz Karacsonyi, who will be doing a repotting demonstration.** Liz is a well known grower with many Championships. I am looking forward to her helpful hints. :)

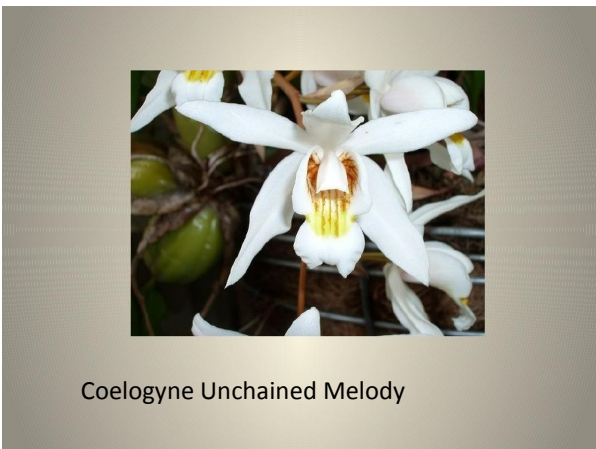
**GROW COMPETITION.**

"Grow Comp. "plants - Sarco. Kulnura Kaliedescope 'Frangipani' x Roberta 'Good Yellow' , & Den. Superstar 'Bright' [ 2017 comp. plant], should be brought along each month. There will be small squares of paper for you to write your name on [ place it under your plant, name down]. The table behind the President's seat is the spot to leave them. They will be judged and points given 1st— 3. 2nd— 2. 3rd— 1 . These points are added to your points for monthly benching. Competition continues until one is brought in flowering. They should have been potted up by now [ our rains will rot the roots in the medium they came in] Bring them to the JULY meeting.

Good growing all.

**Our June speaker was Peter Stubbs, talking on Coelogynes.**

He had an excellent slide show and here are some of his slides and information.



**Light requirements**

Coelogyne (Coel) require bright light to flower and grow well.

Suggest that 50% shade is essential for this requirement.

**Temperature requirements**

Coelogynes are intermediate growers and while a bush house is a minimum requirement they will need overhead protection from the winter cold and rain.

**Humidity requirements**

Summer 85%

Winter 65%

So keeping the floor of your growing area moist at all times is essential to maintain humidity levels.

A raintree with coelogyne planted on it.



**Fertiliser**

Half to quarter strength of your favourite fertilizer recommended weekly to maintain healthy plants.

**Pests**

Your normal pest prevention is also essential

**Media**

Coelogyne can be mounted on cork or Tree fern however I prefer to grow in suitable pots with adequate drainage and recommend a medium bark.

**Thank you Peter for your excellent talk.**



\*\*\*\*\*

**Budget Produce Ulladulla**

**Orchiata Bark** ,40L bags, can be ordered from Budget Produce Ulladulla on 44541373 for \$37.00 per bag.



It takes a few days to come in. :)

\*\*\*\*\*

**WISH LIST**

- Suzanne Brennan—Den. densiflorum
- Anne-Marie C. - .angraecum [ any kind or size]
- Sam Burton—yellow Psychopsis
- Michelle McIntosh—angraecum
- Jo Church- Australian native cymbidium Canaliculatum

\*\*\*\*\*

**FOR SALE**— nothing sent to Editor :(

## CLUB WINNERS from our June meeting:

### OPEN:

**Cymbidium Standard:** 1st Peter Vaughan      RESERVE POPULAR VOTE—  
Novice 68      ->

**Cymbidium Intermediate:** 1st Liz Cleaver & Tony Groube

**Cymbidium Mini:** 1st Frank Bowyer

**Paphiopedilum:** 1st John Warren 2nd Wayne Hamilton

**Cattleya to 70:** 1st John Clancy

**Cattleya over 70:** 1st Ron Boyd

**Native Hybrid:** 1st John Clancy

**Native Species:** 1st John Clancy

**Onc Alliance:** 1st Lyn & Brian Phelan

**Onc Species:** 1st Liz Cleaver & Tony Groube [29]

**Miscellaneous:** 1st Liz Cleaver & Tony Groube [31]

**Species:** 1st Lyn & Brian Phelan      2nd Lyn & Brian Phelan



POPULAR VOTE—Novice 63

<-



POPULAR VOTE—

Intermediate      52 ->

### INTERMEDIATE

**Cattleya up to 70mm:** 1st John Harriman

**Cattleya over 70mm:** 1st Rod Thomas      RESERVE POPULAR  
VOTE—Intermediate

**Onc Alliance:** 1st John Harriman [52]



### NOVICE:

50      ->

**Cymbidium Standard:** 1st Carolyn Campbell

**Cymbidium Mini:** 1st Jo Church

**Cattleya to 70mm:** 1st Carolyn Campbell

**Native Hybrid:** 1st Jo Church

**Oncidium Alliance:** 1st Jo Church

**Miscellaneous:** 1st Jo Church [63] 2nd Jo Church [66]

**Species:** 1st Margaret Reeves [68]

**Phalaenopsis:** 1st R. Cox

**FERN:** 1st Harry Harris

**FOLIAGE :** Frank Bowyer



POPULAR VOTE—Open 31 ->

### Popular Vote:

**Open:** 1st L. Cleaver & T. Groube[31]      RESERVE POPULAR VOTE—  
2nd L. Cleaver & T. Groube [29]      Open 29      ->

**Intermediate:** 1st John Harriman[52] 2nd Rod Thomas[50]

**Novice:** 1st Jo Church [63] 2nd Margaret Reeves[68]



### GROW COMP. WINNERS:

**Sarc:** 1st Michelle McIntosh      2nd B. & L. Phelan      **Den.:** 1st L. Cleaver & T. Groube      2nd Michelle McIntosh

## ORCHID COLOURS AND MEANINGS

Once deemed a rare and highly exotic flower, said to contain healing powers and only owned by those who could afford them; the orchid has now grown to be one of our most popular and loved indoor plants .

The beauty of receiving an orchid as a gift is that each colour is symbolic and is believed to represent a different meaning:

### Red

When you think of the colour red, it is likely you will associate this with romance - and the same can be said for the red orchid. Said to represent love, the red orchid is a sign of affection and was once used as a main ingredient in love potions! They can also be a sign of bravery and courage.



### Orange

Know somebody starting a new job? Or preparing for an important presentation? Receiving an orange orchid before a nerve-racking event is a sign of pride, confidence and enthusiasm.



### Yellow

Yellow is a popular colour in spring and brings with it symbolisation of new life; the word 'spring' itself signifies a move or leap forward. To give a yellow orchid could be a sign of a new beginning in someone's life, friendship or joy.



More colours next newsletter. :)

## 2018 PROGRAM

### July

**9th—General meeting—guest speaker—Liz Karacsonyi [ repotting demonstration ]**

13 & 14th – Eurobodalla Orchid Club Winter Show, Moruya

20-21st - Batemans Bay Orchid & Foliage Society Winter Show

**21st— Woolworths Promotion, 9 a.m. to 3 p.m.**

20-22nd - AOCC 2018 'Orchids in the Foothills'

**28-29th -MUOS Winter Show**

### August

**13th— General meeting—Winter Show presentation of trophies, guest speaker—Dennis Dempsey [ roses]**

17th—St. Ives Orchid Show ,bus trip

25th-26th— Eurobodalla Orchid Club Spring Show, Narooma

### September

7-8th – Batemans Bay Orchid & Foliage Society Spring Show

**8 th — Woolworths Promotion, 9 a.m. to 3 p.m.**

**10th—General meeting— Member's orchid auction [ 10% to club]**

**15-16th – MUOS Spring Show**

### October

**8th - MUOS A.G.M. &Spring Show presentation of Trophies**

19th-20th Batemans Bay Orchid & Foliage Society Native Show

### November

**12th—General meeting—guest speaker—Paula Brown [ Sarcocilus ]**

### December

**10th – MUOS Christmas Party**

\*\*\*\*\*

### Society Polo Shirts

Society Polo Shirts can be ordered from the Secretary. These are coloured purple with a white logo and are available in the following sizes.

Ladies 8-24

Mens to 5XL

**See the Secretary if interested in one.**

## NOVICE CORNER BY A.M. & J.C.



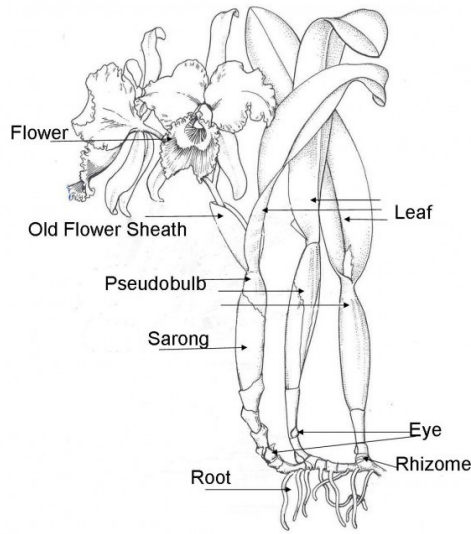
**GROW Orchids**  
TIPS FOR BEGINNERS



**All novices need help.**

Our questions need answers and we learn by doing, seeing, hearing and picking the brains of experience growers.

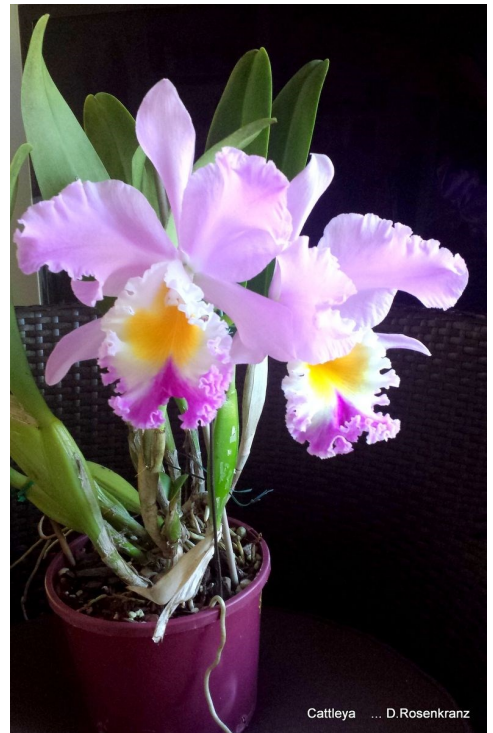
**If you have a question—send it to the editor and we will try to find the answer for you.**



\*\*\*\*\*

**<- How to know your orchid parts?**

After looking at this I checked out my cattleyas to see if they had all these parts—I really wanted to see their sarongs. :)



\*\*\*\*\*

**Some hints for beginners from Tony Groube.**

- Watch out for caterpillars, snails/slugs, mealy bugs and crickets—these ARE NOT YOUR FRIENDS— deal with swiftly.
- Remove dead leaves without delay and watch carefully yellowing leaves [ look for reasons they are yellowing].
- Maintain air flow— through out winter give them space [ not huddled together in the cold].
- Keep the area tidy, floor should be rubbish free. This can hide unwanted livestock.
- Insect free flowers—spray with regular fly spray, 60 to 90 cm above the flowers/plants—gentle wafting, not close, as coldness will damage them.

\*\*\*\*\*

**Making more orchids .**      →

Now this is an interesting way to have more orchids I thought. This works with **SYMPODIAL** orchids.



# DID YOU KNOW ????

Last month's newsletter had a great article about Laelia Anceps. It came from an American orchid society. The growing time they talked about April to November was for Northern Hemisphere—the equivalent for us would be November to April. So as it is our winter now, they should be resting [ cut back on watering and feeding].



Here is another plant that needs a rest over winter.

Bifrenaria– best moved into full sun in winter. Keep dry until flower spikes appear than give it a big feed and a hand full of dolomite. [ Michelle McIntosh]

**Get Well Wishes to any club member that is unwell.**

\*\*\*\*\*

Cheers AM



14 Charles Street MOGO NSW 2536 44742291

### Orchid Supplies

Karen has new stocks of Orchiata bark at \$35 per bag and is offering 15% discount on pots to orchid club members – proof of membership should be provided please.



Phone: 4455 4435                      74 Princess Highway  
 Mobile: 0411 590 148                Ulladulla NSW 2539  
 Email: Ulladulla@tyrepower.com.au    w.w.w.tyrepower.com.au  
 Keith Forster - Manager



**The committee** would like to thank those generous members that provide the goodies for afternoon tea and also the members who bring in plants etc. for our monthly raffles. Also we thank the people who help set up and clean up the hall as with many hands it doesn't take very long.



### **-REMEMBER -**

Please do not water your plants before benching them, at our meetings or shows, as it makes quite a mess. Thank you. :)



**Disclaimer:**  
 The Milton-Ulladulla Orchid Society Inc., is not responsible for any information given by a member, visiting speaker or material printed in the Club's Newsletter. 2018